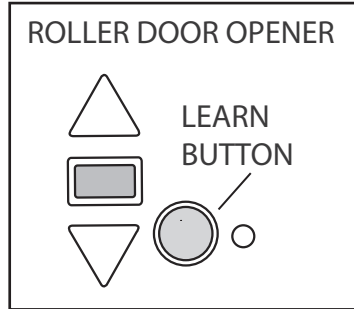


For use with Security+2.0 Garage Door Openers. The garage door opener activates when the 4-digit Personal Identification Number (PIN) and ENTER button are pressed on the Keyless Entry.

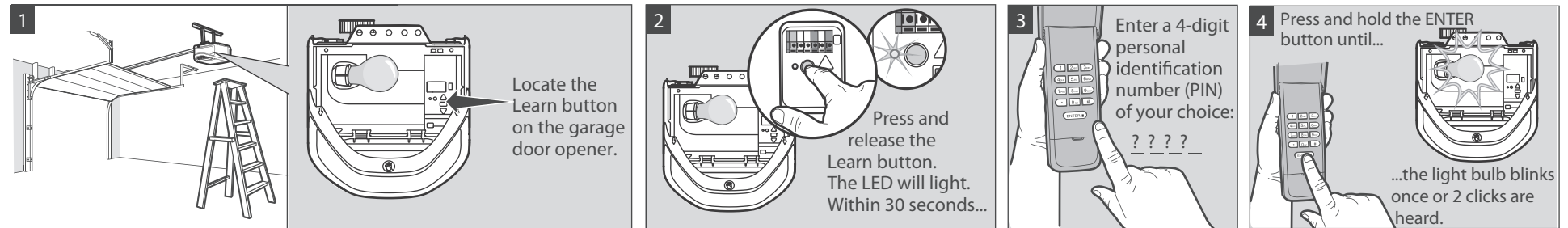
Install the battery and program the Keyless Entry prior to installation. Make sure the garage door opener has a working courtesy light because it is a programming indicator.



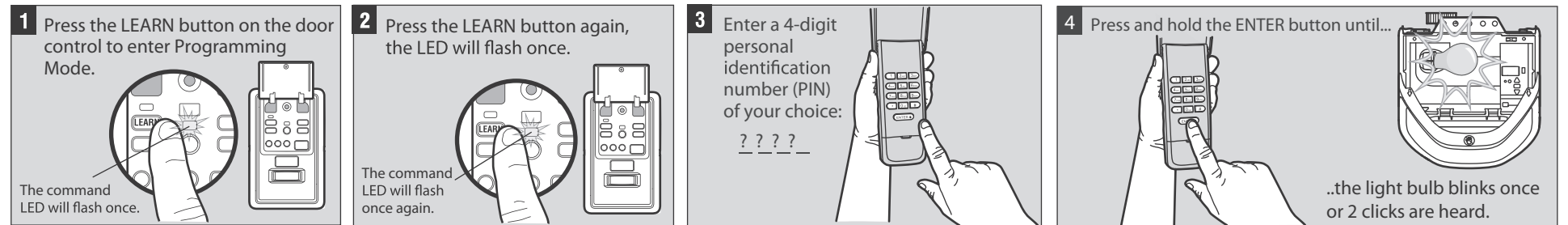
⚠ WARNING

- To prevent possible **SERIOUS INJURY** or **DEATH** from a moving gate or garage door:
- Install Keyless Entry Control within sight of the garage door, out of reach of children at a minimum height of 1.5m, and away from all moving parts of door.
 - ALWAYS keep remote controls out of reach of children. NEVER permit children to operate, or play with remote controls.
 - Activate gate or door ONLY when it can be seen clearly, is properly adjusted, and there are no obstructions to door travel.
 - ALWAYS keep gate or garage door in sight until completely closed. NEVER permit anyone to cross path of moving gate or door.

PROGRAM INITIAL PIN - using the Learn button

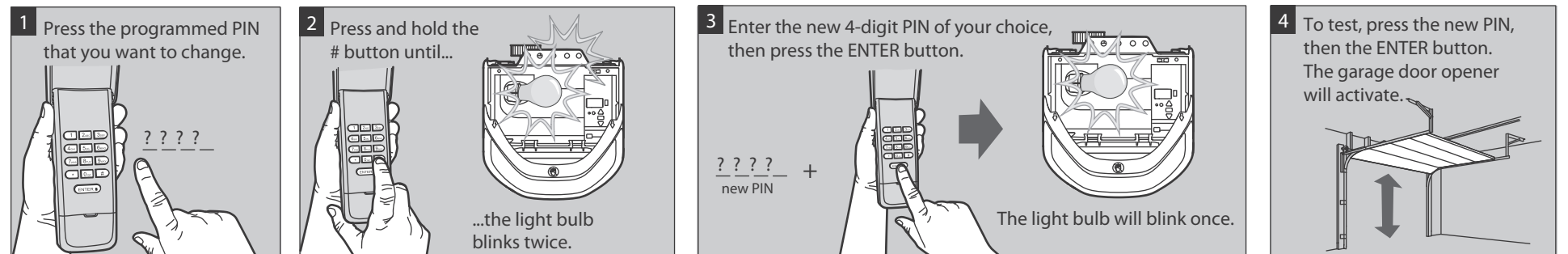


PROGRAM INITIAL PIN - using a multi-function door control* (if this option is installed)



To test, press the PIN, then press the ENTER button. The garage door opener will activate. To program the Keyless Entry to more than one garage door opener, repeat the steps above using a new PIN for each additional garage door opener.

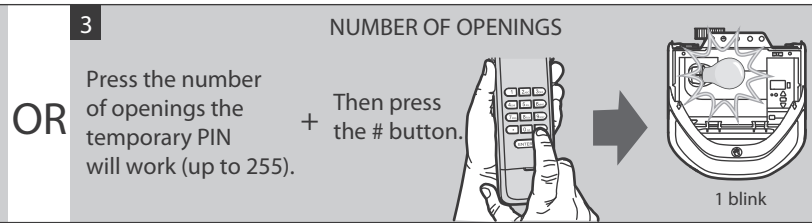
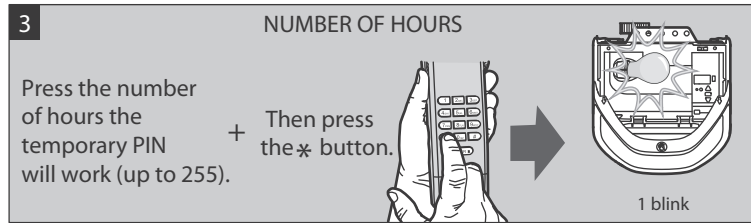
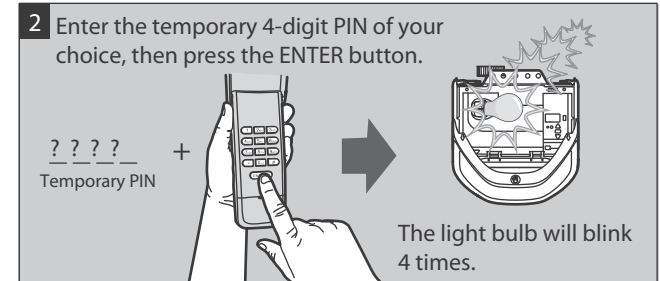
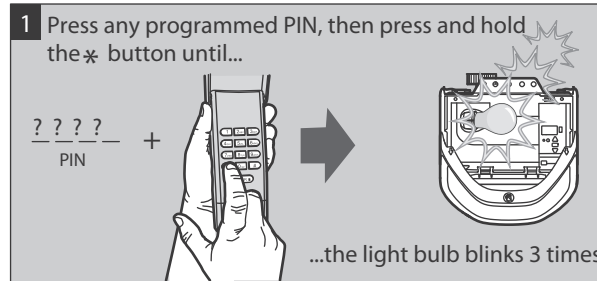
CHANGE AN EXISTING PIN



*Optional accessory

PROGRAM A TEMPORARY PIN

A temporary 4-digit PIN can be programmed to allow access to visitors. Each programmed PIN can program one temporary PIN. The temporary PIN can be set for a number of hours or a number of door openings. The temporary PIN cannot be the same as any previously programmed PIN.

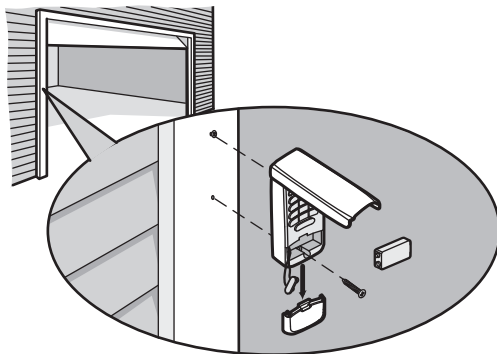


To test, press the temporary PIN, then press the ENTER button. The garage door opener will activate. If the temporary PIN was set for a number of openings, the test will use up one opening.

To clear the temporary PIN, repeat steps 1-3 above, setting the number of hours or openings to 0 in step 3.

INSTALLATION

- 1** Select a location to mount the Keyless Entry at a minimum height of 5 feet (1.5 m) out of the reach of children.
- 2** Remove battery cover and battery.
- 3** Mark the top mounting hole and drill 1/8 inch (3.2 mm) pilot hole.
- 4** Install the top screw, allowing 1/8 inch (3.2 mm) to protrude above the surface. Position the Keyless Entry over the top screw.
- 5** Mark the bottom hole and drill 1/8 inch (3.2 mm) pilot hole. Install the bottom screw. Do not overtighten to avoid cracking the plastic housing.
- 6** Reinstall battery and replace cover.



OPERATION

The garage door opener activates when the PIN and ENTER button are pressed. The keypad will blink for 15 seconds, during that time the ENTER button can be used to stop, start or reverse the door.

If the wrong number is accidentally pressed, press the correct PIN then the ENTER button. The Keyless Entry will transmit only the last four digits that were pressed before the ENTER button.

ONE BUTTON CLOSE: The Keyless Entry has a feature that allows the door to be closed using the ENTER button instead of a PIN. **NOTE:** This feature is not available on external receivers.

To deactivate the one button close feature:

- 1** Press and hold the 1 and 9 buttons for 10 seconds.
- 2** The keypad will blink four times when the one button close feature is deactivated.

To activate the one button close feature:

- 1** Press and hold the 1 and 9 buttons for 10 seconds.
- 2** The keypad will blink twice when the one button close feature is activated.

REPLACEMENT PARTS

Battery	6F22 9V
Keypad Cover.....	41D621-1
Battery Cover.....	41D541

BATTERY

WARNING

To prevent possible **SERIOUS INJURY** or **DEATH**:

- NEVER allow small children near batteries.
- If battery is swallowed, immediately notify doctor.

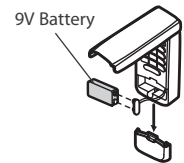
Replace the battery when the keypad becomes dim or does not light after a button is pressed.

Dispose of old battery properly.

Chamberlain service centres:

Australia
Phone toll free 1800 638 234
gomerlin.com.au

New Zealand
Phone toll free 0800 653 667
gomerlin.co.nz



WARRANTY

ONE YEAR LIMITED WARRANTY

The Chamberlain Group, Inc. warrants to the original consumer purchaser of this product that it is free from defect in materials and/or workmanship for a period of 1 year from the date of purchase.